

AMENDED UNIFORM EXPECTATIONS

Please contact Highview College to discuss individual uniform amendments. These are commonly agreed between families and the College in consideration of individual circumstances arising from psychological, cultural, physical and/or religious requirements.

Amendments are not approved in response to fashion preferences, including, (currently): facial piercings, false eyelashes, false nails, etc. However, changes to standard expectations often result from student suggestion, including the introduction of the softshell jacket, the jersey, pearl and birthstone earrings, winter beanies and the HPE top and shorts, which were all introduced by students.

HIGHVIEW STANDARD UNIFORM ITEMS (UNISEX) AVAILABLE AT MACKS

Students may choose from the following uniform items sold at Macks in High Street:

- Highview navy tailored shorts or Highview navy tailored pants or Highview dress (length – at the knee) or Highview Kilt (length – at the knee)
- White cotton shirt with Highview logo either short or long sleeved to be worn with kilt, shorts or pants
- Dark navy-blue mid-length socks (no logos) or navy tights may be worn with the kilt
(available at Reception and Macks)
- Highview bucket hat/cap required in Terms 1&4
(available at Reception and Macks)
- Navy V-neck woollen jumper with logo or Highview jersey with logo (optional)
- School Blazer (optional)

STANDARD UNIFORM ITEMS AVAILABLE AT RECEPTION

- School Tie (optional)
- Highview bucket hat/cap
- Highview winter Beanie (only worn in Terms 2&3)
- Socks

AVAILABLE ON-LINE

Highview Softshell Winter Jackets

Students can check their size by trying on samples available at Reception. Orders and payment are made on-line and the jackets delivered to your address by return mail. Jackets can be ordered directly from the supplier via their website:

<https://indigowolf.com.au/highview-college>



\$105

These may be worn with the School uniform and the PE Uniform, at Sport and to and from School. Postage of \$15 is charged once with each order.

Highview Jersey

Orders and payment are made on-line and the jerseys delivered to your address by return mail. Jerseys can be ordered directly from the supplier via their website:

<https://indigowolf.com.au/highview-college>



\$80

The Jersey may be worn with the Highview College HPE uniform and the day uniform. Postage of \$15 is charged once with each order.

STANDARD SPORTS & HPE UNIFORM (UNISEX)

- Highview navy sports shorts or plain navy tracksuit pants (any brand)
- Navy blue and red Highview PE top (sold at Macks)
- Navy blue mid-length socks – available at Reception and Macks (no logos)
- Sports shoes (any brand)
- Highview College bucket hat or cap – available at Reception and Macks
- Soft shell jacket (optional)



ADDITIONAL ADVICE

School Shoes

Plain black leather school shoes, as pictured or similar. (Not available at Macks)



Body Decoration

Facial piercings, glitter, stickers, bangles (arm, ankle or anywhere else) are not to be worn. Only College-supported wristbands are permitted for the duration of a fundraising or awareness-raising campaign eg. Mental Health Week-Beyond Blue.

Jewellery

While wearing the Highview College uniform jewellery is not permitted, other than a plain watch.

Comfort Items

Items to which students are emotionally attached or which have significant meaning, or which comfort them psychologically, may be worn on a long chain under the uniform so that it is not visible when wearing the uniform.

Earrings

Visible piercings are to be in the earlobes only (one pair only - one in each earlobe). All other visible piercings are to be removed while the Highview uniform is being worn – including nose, ear (other than lobe), tongue, brow, etc.

Clear or skin-tone studs or band-aids covering piercings are not permitted.

Students who plan to have additional piercings, should do so after the last day of the academic year in December. This will allow sufficient time for healing to take place over summer and the additional piercing to be safely removed while the uniform is being worn throughout the school year.

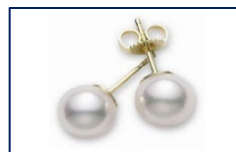
There are five options in earring style permitted, one worn in the lobe of each ear.



Silver or Gold plain sleepers



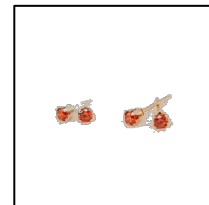
Plain Silver Studs no bigger than 6mm



Plain Pearl Studs no bigger than 6mm



Plain Gold Studs no bigger than 6mm



Birthstone Studs no bigger than 6mm

Small, plain silver or gold sleepers or small, round silver, gold, birthstone or pearl studs are permitted. No other earrings are permitted with the uniform.

Makeup

Light, natural looking makeup will be accepted. Excessive makeup will need to be removed while wearing the Highview College uniform.

Hair

- Neat and tidy and off the face at all times
- Hair which is long enough to be tied back, must be tied back
- Ribbons, hairbands and headbands must be navy, white or red (single colour only)
- Hair should be a natural colour (avoid streaks and other effects)
- Extreme styles and cuts are not acceptable (seek advice from Heads of Year regarding acceptable styles and colours before making appointments)
- Hair should not be any shorter than a No. 2 cut
- No facial hair – clean shaven
- Sideburns no longer than the earlobe

Eyelashes

Light, natural looking makeup will be accepted. Enhanced eyelashes and excessive mascara / eyeliner are not appropriate while wearing the Highview College uniform.

Nails

Only clear nail polish is permitted. Other colours, false nails or enhanced nails are not to be worn with the Highview College uniform at any time.

Tattoos

No tattoos are to be visible while wearing the Highview College uniform.

COMMUNITY SERVICE DAYS

Clothing on Community Service Days is colour-themed – these are not ‘free dress’ days. Staff and students show their support by dressing in the related theme on each day:

- Red for Red Shield
- Blue for Asthma Awareness
- Orange for Local SES
- Bright colours for Mental Health
- Footy Colours for Brain Cancer Research

We also make a gold coin donated on each of these days to support these initiatives.

On these days, students should:

- Be comfortable
- Respect the designated purpose of the day and comply with the advertised theme
- Ensure all clothing is in clean and in good repair
- Wear enclosed and secure shoes (thongs, strappy sandals and slip-ons are never acceptable – runners are acceptable)
- Avoid clothing which advertises substances not permitted at school or which has images or text which may offend
- Comply with all School policies relating to hair / jewellery / make-up / nail polish / facial piercings / glitter / stickers / bangles etc. which remain the same on out of uniform days